

> WOW!



Rob Palmer



Welcome to RGS insite issue 17

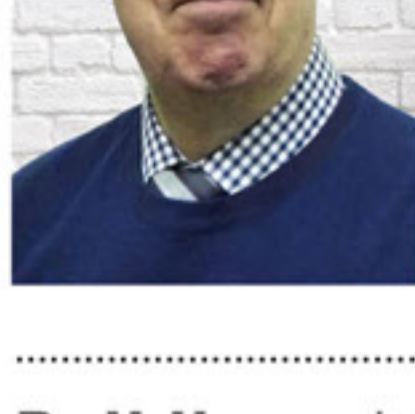
Our regular newsletter celebrating more than a decade of drilling, keeping you up to date with RGS and industry news.

Rogers Geotechnical Services Ltd are site investigation specialists offering ground investigation and geotechnical services to developers, builders, structural and consulting engineers, architects, insurance companies, local authorities, piling and foundation engineers, private individuals and other geotechnical consultants.

WOW!

NEW IMPROVED RGS PREMISES!

WE'RE IN!



We are delighted to report another **busy and productive month** as we move into Autumn!

Well the good news is that RGS has now completed its **'workshop/lab move'** and our team is safely ensconced in our new premises.

We've already rolled out the move's many benefits in previous newsletters and are confident our new HQ will allow RGS to consolidate and build on its market share.

Building relationships

Our regular readers will know that we were officially named as **'supply chain providers'** by the North Yorkshire-based company: **LGSF - Solutions in Steel.**

LGSF specialises in building light-eight framed buildings - from industrial structures to three-bedroomed detached houses.

It took three men just **two days** to erect the **prototype** three-bedroomed building below, following its manufacture in their Scarborough factory. Quite phenomenal when you think how long it takes to build a conventional house!



AMAZING!

Do you need a phase one environmental desk study report?



RGS STANDARD
RGS PREMIUM

Contact us for more details and to discuss your options for this service.



2 DAYS!

ONLINE COVERAGE

Supporting the supply



It was interesting to spot the following coverage in **The Examiner** as RGS were tasked with the foundation design for the scaffolding and our engineer, **Rob Palmer**, produced all 70 of them.

Newspaper coverage ran as follows:

“ Motorists in West Yorkshire may be noticing **eye-catching nets** and scaffolding springing up on pylons across the area, most prominently across Junction 26 of the M62.

And while it looks like it could be part of an elaborate circus stunt it is in fact for something far more essential entirely - maintaining our **electricity supplies**.

National Grid is carrying out the works to refurbish the 50kV overhead line, which runs along the M62 corridor, between substations at Monk Fryston, in North Yorkshire, and Bradford West, near Bradford.

”

To read the full article [click here](#)

SAMPLE ANALYSIS

What is that smell?



Rob Palmer also had another interesting job when he discovered material during a ground investigation - with a strong and distinctive smell of **almonds!**

Anyone with knowledge of contaminated ground will know that the aroma of almonds can be consistent with the presence of **cyanide!** Fortunately, sample tests proved a far more benign source - almond oil.

Further research suggests this may have been used, historically, as lubrication in engineering processes at the site.

STAFF WORKS EXPERIENCE

New Recruits

RGS is set to greet another **Roger Bullivant** graduate engineer next month (**October**) when **Ross Slater** joins us from their Alioa office.

We are also looking forward to welcoming **Poppy Tuck**, who comes to us on work experience again, after successfully completing a similar period with us last year.

Poppy already has secured a **First Class Honours** degree in Geology from Plymouth University in Geology and will be working with us, prior to commencing her Masters.

She will be with us on Wednesday, Thursdays and Friday from the end of this month (September).

SITE SNAPSHOT: PONTEFRACCT CASTLE

Fascinating Finds

For the second time, RGS has been working at the **historic castle**, previously billed as **The Key to the North** and site of the infamous murder of King Richard II.

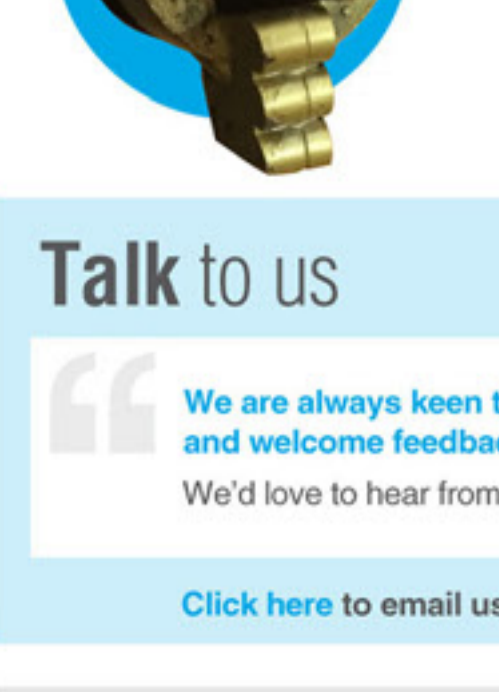
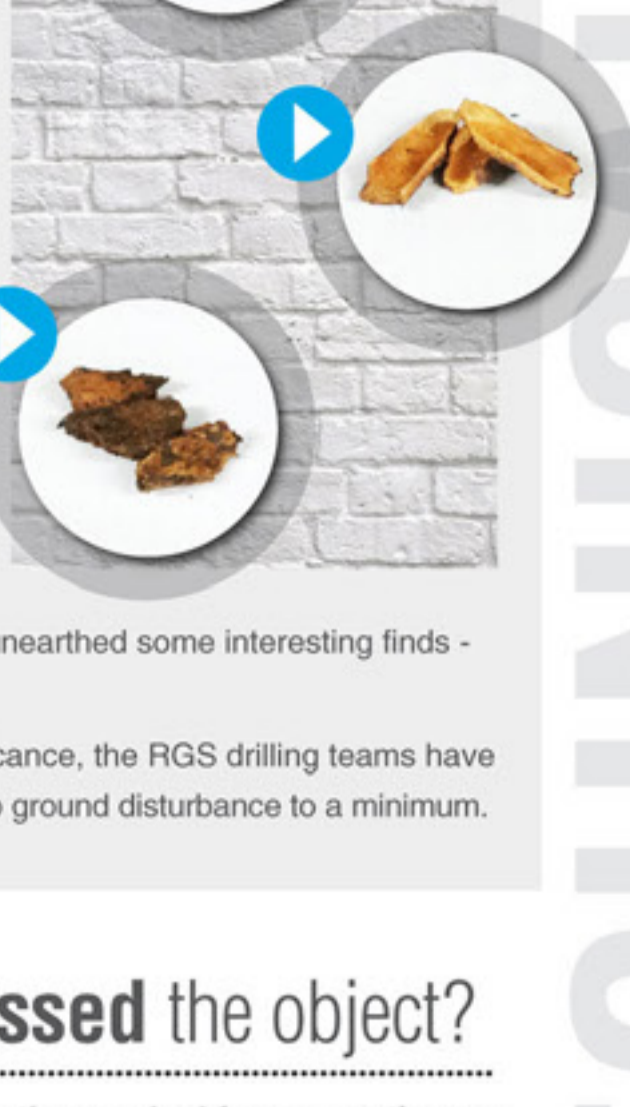
Thanks to the Heritage Lottery Fund, the castle site's is currently undergoing major building and conservation work, paving the way for a **new Visitor Centre**.

Working alongside archaeologists, RGS has also been helping build a retaining wall.

Once completed, the project will help to improve public access to this part of the castle, which is now a ruin.

Our Graduate Engineer Charlotte Mason has unearthed some interesting finds - including pieces of **bone**, **shell** and a **snail**.

In recognition of the site's major historic significance, the RGS drilling teams have been working with the greatest skill care to keep ground disturbance to a minimum.



Guessed the object?

Last month we asked for suggestions as to the identity of this piece of kit. We can confirm it's a **3-inch Non Coring PCD Bit**.

So now you know!

CLIENT FEEDBACK

Talk to us

“ We are always keen to hear what clients think of our service and welcome feedback from within the industry.

We'd love to hear from you.

[Click here](#) to email us your comments

For more information about your investigation requirements please do not hesitate to contact us

Telephone on 01484 604 354

or [click here](#) to email us